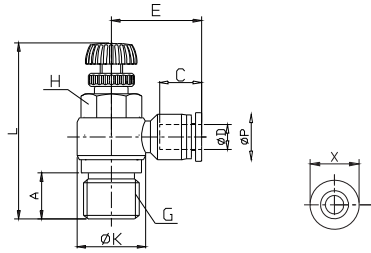




Pneumatic Fiting

Badron
Pneumatic

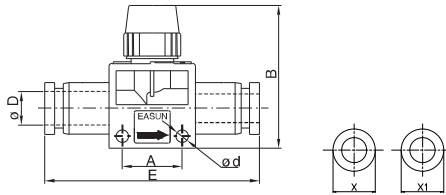




Speed Controllers **BASL-G**

تنظیم سرعت دستی

Model	Control Out	Control In	ØD	G	A	H	E	C	L
									min max
BASL4-G01	BASL4-G01B	4	G1/8	6.0	10	22.3	14.9	37.5	44.3
BASL4-G02	BASL4-G02B	4	G1/4	8.3	14	24	14.9	43.7	51.3
BASL6-G01	BASL6-G01B	6	G1/8	6.0	10	22.9	15.4	37.5	44.3
BASL6-G02	BASL6-G02B	6	G1/4	8.3	14	24.9	15.4	43.7	51.3
BASL6-G03	BASL6-G03B	6	G3/8	9.5	19	26.6	15.4	48.4	55.3
BASL6-G04	BASL6-G04B	6	G1/2	13	24	29.6	15.4	52.7	59.5
BASL8-G01	BASL8-G01B	8	G1/8	6.0	10	25.3	17.3	37.5	44.3
BASL8-G02	BASL8-G02B	8	G1/4	8.3	14	28.4	18.3	43.7	51.3
BASL8-G03	BASL8-G03B	8	G3/8	9.5	19	29.3	18.3	48.4	55.3
BASL8-G04	BASL8-G04B	8	G1/2	13	24	32.3	18.3	52.7	59.5
BASL10-G02	BASL10-G02B	10	G1/4	8.3	14	32	20.5	43.7	51.3
BASL10-G03	BASL10-G03B	10	G3/8	9.5	19	32.5	20.5	48.4	55.3
BASL10-G04	BASL10-G04B	10	G1/2	13	24	35.5	20.5	52.7	59.5
BASL12-G02	BASL12-G02B	12	G1/4	8.3	14	32	21.6	43.7	51.3
BASL12-G03	BASL12-G03B	12	G3/8	9.5	19	35.3	21.8	48.4	55.3
BASL12-G04	BASL12-G04B	12	G1/2	13	24	36.3	22.3	52.7	59.5



Ball valve **BAHVFF**

شیر قطع و وصل

Model	Two-way	Three-way	ØD	Ød	A	B	E	X	X1	C1	C2
BAHVFF06-06B	BAHVFF06-06	6	4.2	16.5	42.6	51.1	12			17.9	17.9
BAHVFF08-06B	BAHVFF08-06	8	4.2	16.5	42.6	51.6	14	12		18.8	17.9
BAHVFF08-08B	BAHVFF08-08	8	4.2	16.5	42.6	52	14			18.8	18.8
BAHVFF10-10B	BAHVFF10-10	10	4.2	21.5	47	63.3	17			21	21
BAHVFF12-10B	BAHVFF12-10	12	4.2	21.5	47	63.7	20	17		22.6	21
BAHVFF12-12B	BAHVFF12-12	12	4.2	21.5	47	64.1	20			22.6	22.6