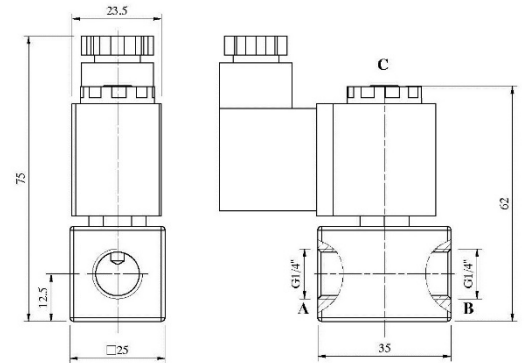




Description

Three way direct acting solenoid valve with spring return. Suitable for gaseous and liquid media compatible with the (body/seals) material used, vacuum. Forged brass, nickel-plated brass or stainless steel body. Stainless steel internal parts. Stainless steel springs. 360° degrees orientable solenoid. Mountable in any position.

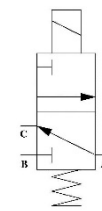
Dimension mm



ELECTRICAL INFORMATION

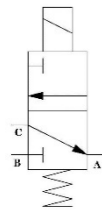
Continuous duty glass-reinforced nylon molded coil with electrical Connections suitable for DIN-43650A plug (2 poles ground) or "faston" Wire terminal.
 Coil type: B6
 Insulation class: F (155°C) - H (180°C) upon request.
 Winding wire class: H (180°C)
 Protection class: Waterproof IP-65 (EN60529 standards)
 When properly plug connected with a DIN-43650A plug.
 Duty: Continuous (S.I.) 100% ED
 Power consumption: Alternate current 11VA (inrush 28VA)
 Direct current 11W
 Voltage tolerance: ± 10%
 Electrical Insulation: >1000 MOhm
 Dielectrically Strength: >2000 V/1'
 Standard voltages: 12 - 24 - 48 - 110 - 220 Vac~ 50/60Hz
 12 - 24 - 48 - 110 - 220 Vdc=
 Other voltages available upon request.

OPERATION



Normally closed

In: B
 Out: A
 Vent: C
 Coil de-energized: Input B closed
 From B to vent C
 Coil energized: From A to B
 Vent C closed



Normally open

In: C
 Out: A
 Vent: B
 Coil de-energized: From C to A
 Vent B closed
 Coil energized: From A to vent B
 Input C closed

SPECIFICATIONS AND AVAILABLE OPTIONS

Model	Orifice diameter mm A,B/C	PRESSURES IN BAR				Flow factor kv (liters/min)	Weight Kg.
		Min. /Max. Operating differential pressure					
		Max.Norm. Close		Max.Norm. Open			
AC~	DC=	AC~	DC=				
58.004.104.10	3,2 / 1,2	10	10	10	10	1,2	

Body material	Port size	Seals material	Protection class	Option feature
Brass	1/4" Gas	Bunna N	IP65	Stable manual operator
Nickel-plated brass	1/4" NPT			
Stainless steel				